

## Setting up Xming to connect using XDMCP broadcast

Xming URL: <http://www.straightrunning.com/XmingNotes/>

Install two files for minimal X-windows functionality on Windows:

- Xming-6-9-31-setup.exe 2,154KB
- Xming-fonts-7-3-15-setup.exe 32,271KB

*The filenames and sizes will change with new release. The above is for reference.*

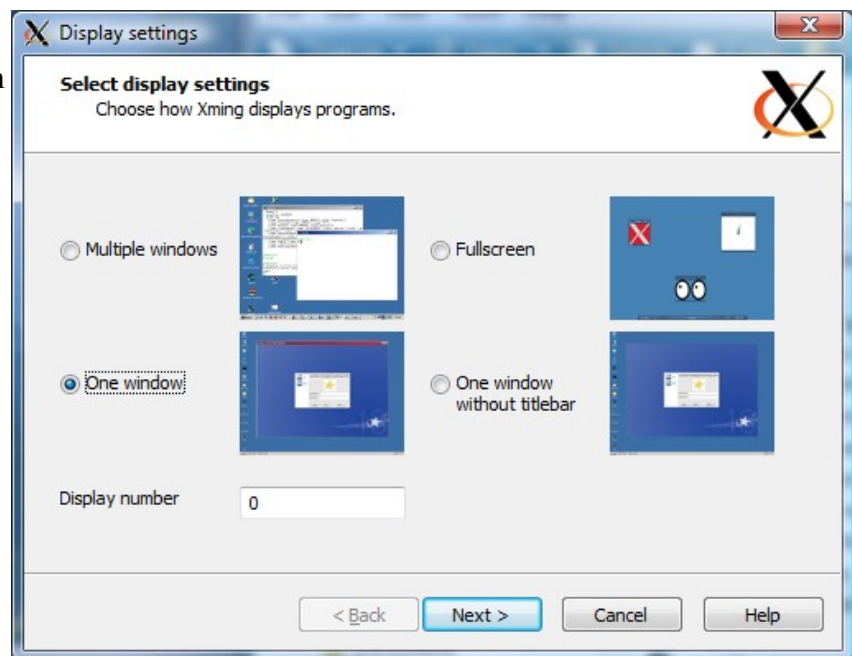
Optionally add icons for Xlaunch and/or Xming on desktop and/or Quick Launch as desired. Xlaunch is the executable used to create configuration files that allow you to quickly connect to a Unix/Linux server.

Assumptions: You have a Unix/Linux server properly set up for XDMCP broadcast.

You have installed Xming in the default location, [C:\Program Files\Xming\](#)

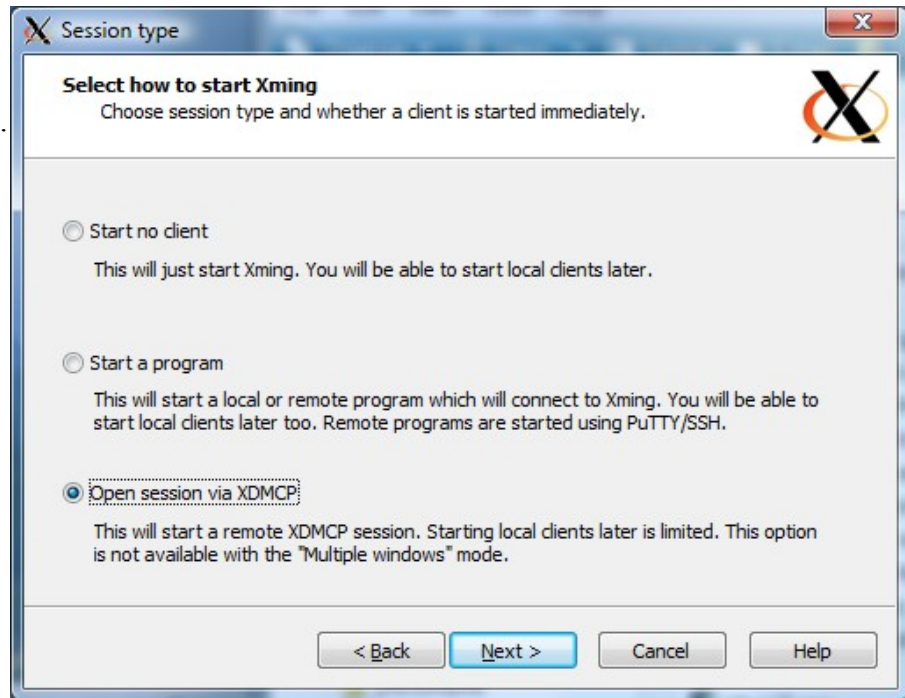
Double-click the XLaunch icon. The following screen will appear, with the Multiple windows item selected. Make sure you select the One window button selected. Display number can be left at 0 (This simply means the monitor/window you're working with right now.)

Click Next.



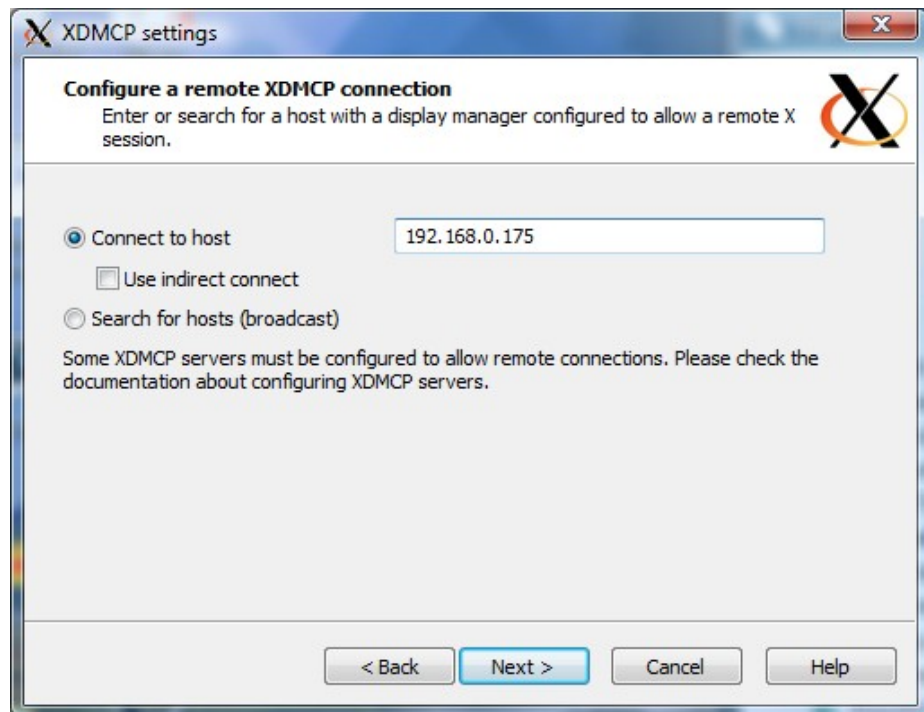
The next window let you decide how to start Xming. The “Start No Client” item is selected by default. Click to select the bottom item, “Open session via XDMCP”, as shown below.

Click next to continue.



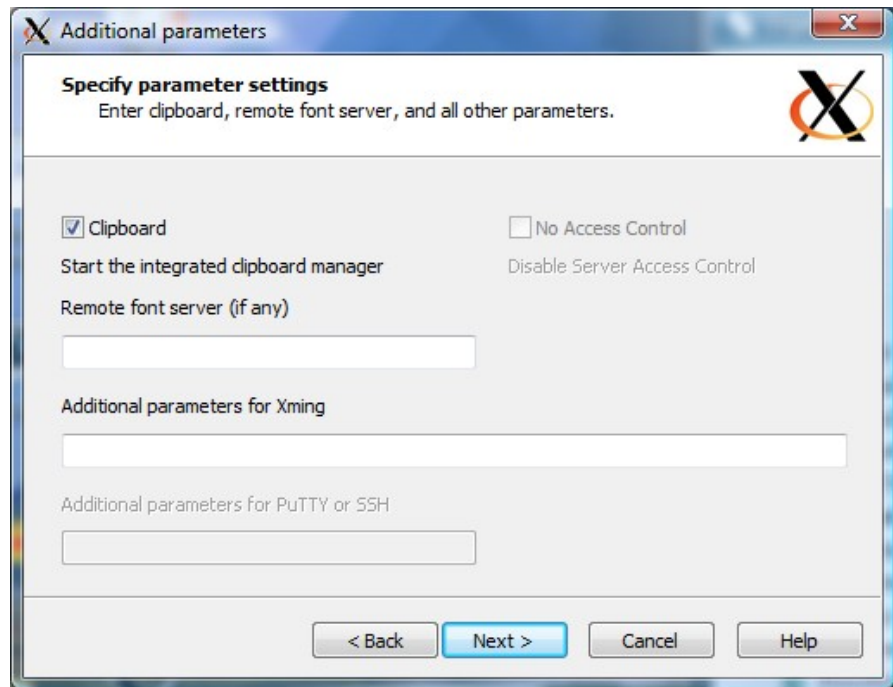
The next window allows you to set XDMCP settings. The “Connect to host” item is already selected. As shown below, enter the IP address OR host name of the server you want to connect to.

Click next to continue.

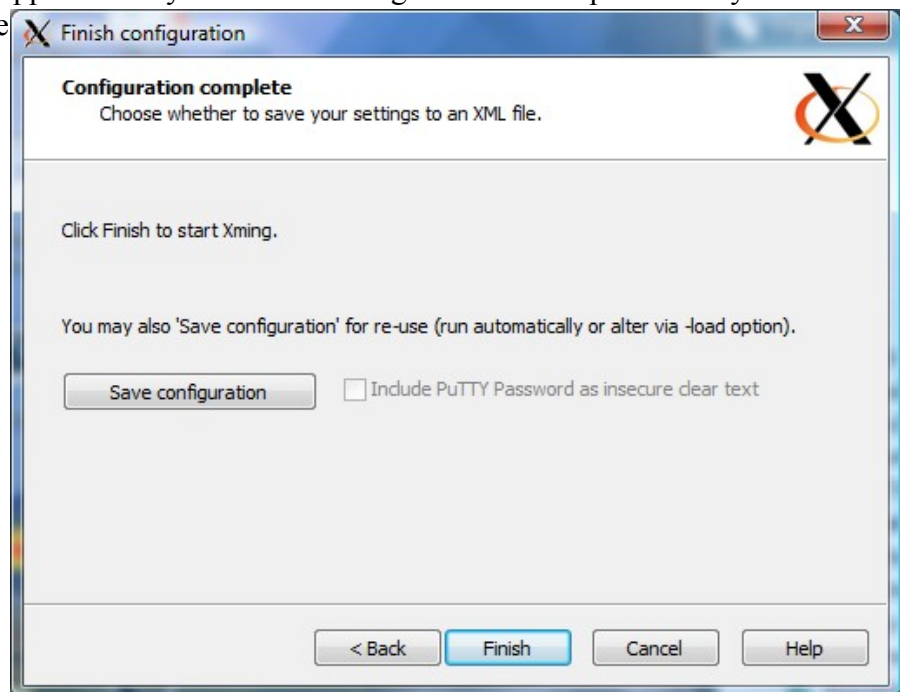


The next window is to allow you to set additional parameters. The only thing you need to is leave the “Clipboard” item checked.

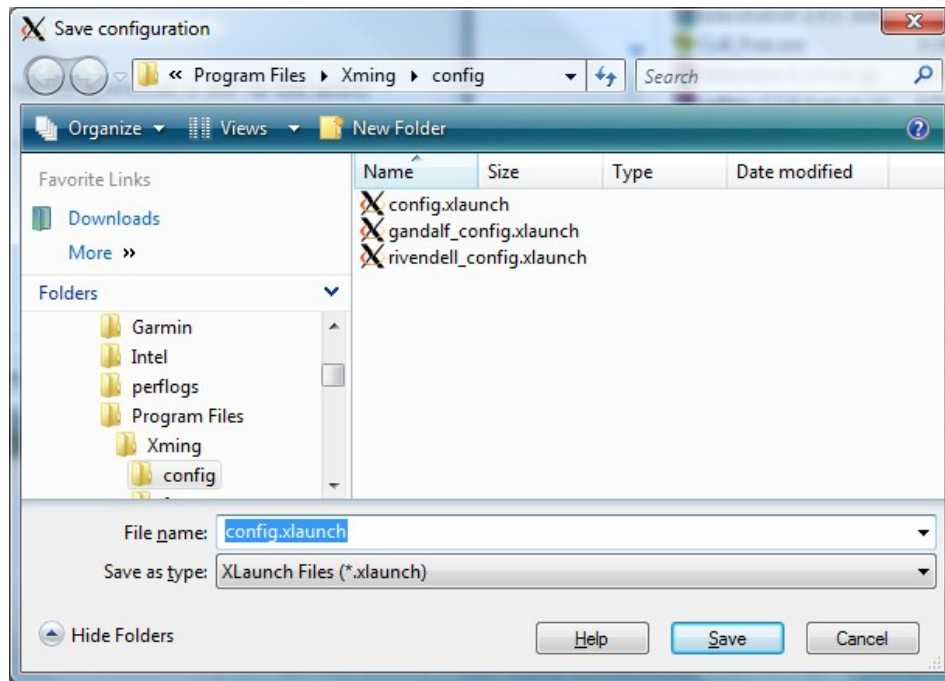
Click “Next” to continue.



The next window that appears tells you that the configuration is complete. But you should a few more things before clicking “Finish”.



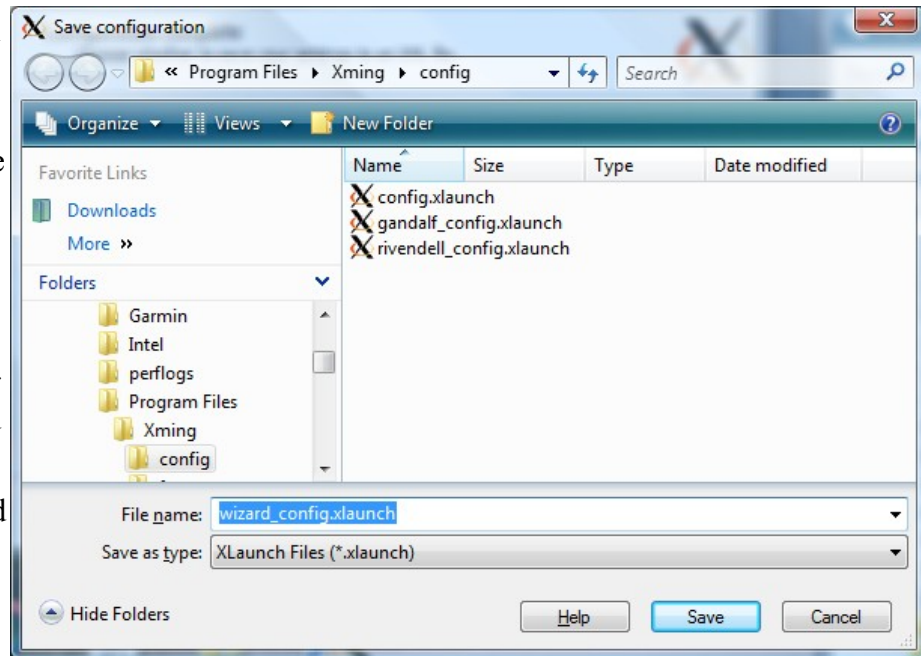
Click “Save Configuration” and a Microsoft Windows file browser window opens as shown below. The default filename for the configuration file is “config.xlaunch”. That works, but I went a bit further.



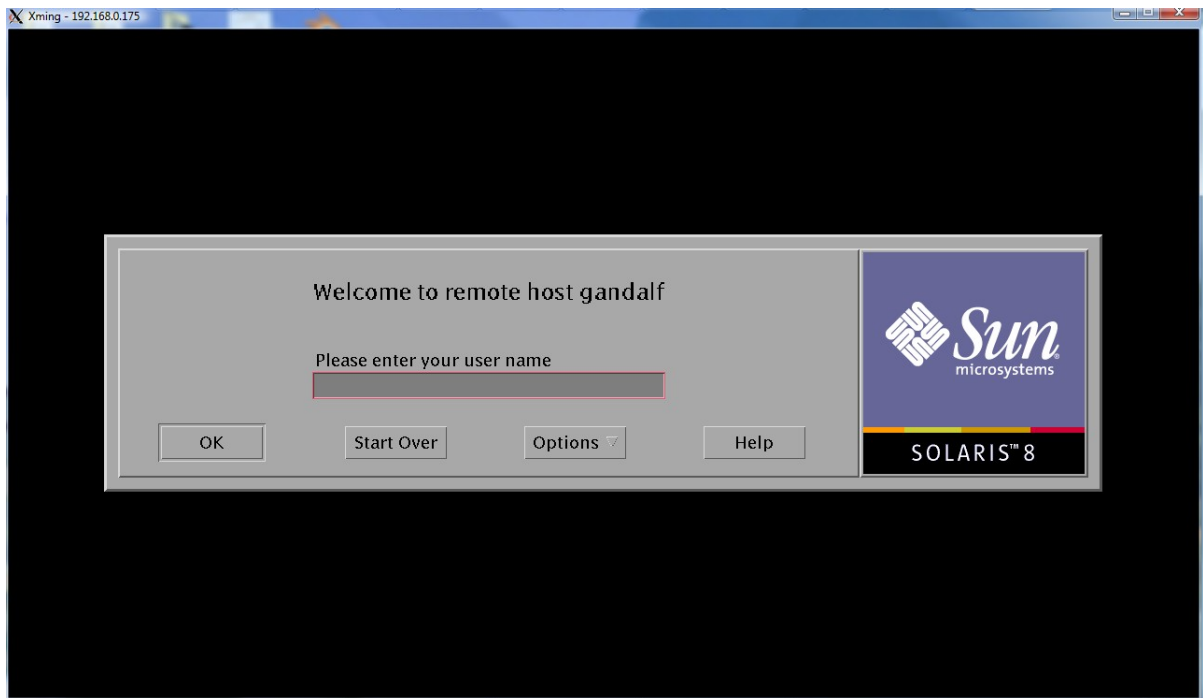
The software will, by default, save configuration files in your home documents directory. I preferred to have the files saved with the program, but wanted to be able to back them up. So in the program directory C:\Program Files\Xming, I created a directory called “config”. I save all my configuration files in this directory.

The next thing I did was change the name of the configuration file to include the name of the server it would connect to. This lets you save a configuration file for each server you need to connect to.

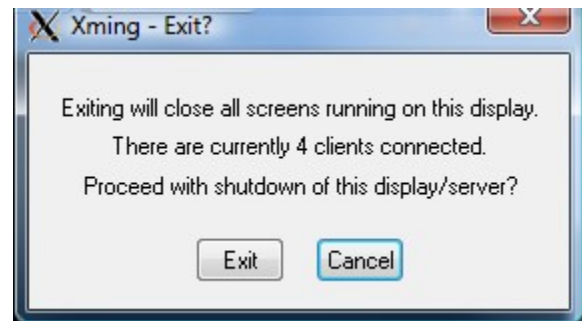
After you've changed the name, similar to what I've done, click the “Finish” button.



When you click “Finish”, Xming will automatically attempt to start an X window session to the server you specified. If it works, you should be presented with a screen similar to the one below.



You can log in or click the “X” to close the window. Clicking the “X” will bring up the following window. Go ahead and click “Exit”.



The last thing to do is create shortcuts to each configuration file that you set up. After the shortcut is created, you can rename each one simply to the name of the server you'll be connecting to.

Now all you need do, is double-click the shortcut the next time you need to connect to your Unix/Linux server.

